



## Parts for 2200-2400-3400-96C-98C-98D

Description	Order#	Price		
Spiral Stalk Roller LH	<a href="#">87737779-N</a>	\$ 67.80	ea	
Spiral Stalk Roller RH	<a href="#">87737776-N</a>	\$ 67.80	ea	
Shim (Spiral Cone)	<a href="#">87013282-N</a>	\$ 6.33	ea	
Idle Arm	<a href="#">87029139-N</a>	\$22.07	ea	
Idle Block	<a href="#">86611369-N</a>	\$ 49.98	ea	
Wear Plate Replaces	<a href="#">87027837-A</a>	\$16.49	ea	
Deck plate LH Bent	<a href="#">87047540-A</a>	\$25.50	ea	
RH Bent	<a href="#">86978032-A</a>	\$25.50	ea	
Deck plate LH Not Bent	<a href="#">57991553LH</a>	\$38.00	ea	
RH Not Bent	<a href="#">57991553RH</a>	\$38.00	ea	
Hydraulic Adjustable LH Bent				
Replaces CNH #87047608	<a href="#">87047608-A</a>	\$49.50	ea	
C/M Special Flat Hydraulic LH	<a href="#">57991552</a>	\$65.00	ea	
<b>C/M Steel Oil Cover w/door fits 2200, 2400,3400 heads</b>				
Replaces Poly CNH#8662090	<a href="#">99772273</a>	\$220.00	ea	
<b>Faster Hydraulic Single Point Hookup</b>				
2 port	<a href="#">LAN2P5065-2-A F C</a>	\$243.75	ea	
5 port	<a href="#">LAN2P5065-5-A F C</a>	\$384.50	ea	
Fittings with restrictor	<a href="#">99992665</a>	\$10.00	ea	
Without restrictor	<a href="#">59992663</a>	\$5.00	ea	
Drive sprocket 2200—2400—3400				
NH 96C 98C 98D	<a href="#">86837081-G</a>	\$16.34	ea	99986837
Gathering Chain	<a href="#">99979313</a>	\$45.65	ea	
Replaces CNH #86979313 ( 48 Pitch ) USA				
Chain guide 2200-2400 series	<a href="#">99611426</a>	\$28.75	ea	
Replaces CNH#86611426				99611426
2200—2400 Knife	<a href="#">86977538-N</a>	\$45.00	ea	
Replaces CNH#86977538				
Blade Kit (Includes 4 Knives and	<a href="#">99991708</a>	\$203.50	ea	16991556
all bolts) for 2200-2400				
Stalk Roller Tube only	<a href="#">59991557</a>	\$40.00	ea	
(Reuse tapered cast hub)				59991557

**Parts for 2200-2400-3400-96C-98C-98D**

Description	Order#	Price	
Auger Slip Clutch Sprocket (14 Teeth #60 Chain) Replaces CNH# 86900920	<a href="#">59992649</a>	\$150.00 ea.	 59992649
Auger Slip Clutch Plate Replaces CNH# 86532351	<a href="#">57992446</a>	\$85.50 ea.	 57992446

VH MFG, INC.

## For Case and New Holland Heads



SS Snout Wear Strips  
2200, 2400, 3400, 2600  
996, 96C, 98C, 98D  
52932490LH  
52932489RH

For 30 inch centers

\$34.00 Ea.

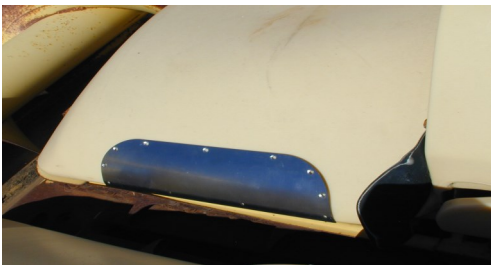
### Mounting hardware supplied



87028633WS

30-38" CNH

Poly SS Wear Panel  
2200, 2400, 3400, 2600  
996, 96C, 98C, 98D  
\$25.96 ea.



80571105 20/22" CNH  
Poly SS Wear Panel  
Centers only use 1104 for  
end panels

2200, 2400, 3400  
996, 96C, 98C, 98D  
\$27.00 ea.



87028633WS  
20/22" CNH Poly SS  
Wear Panel for End pan-  
els only

2200, 2400, 3400  
996, 96C, 98C, 98D  
\$25.96 ea.